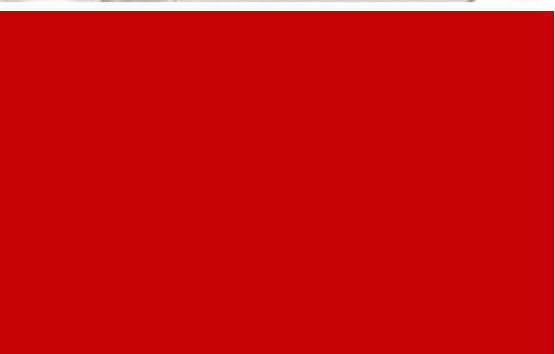
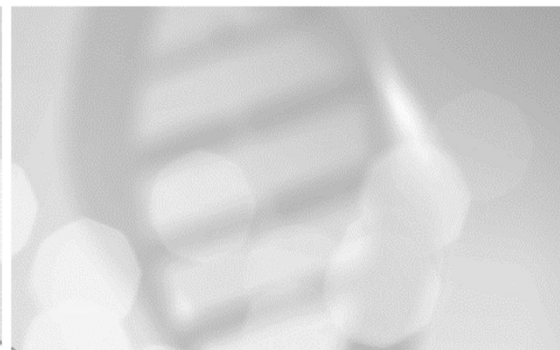
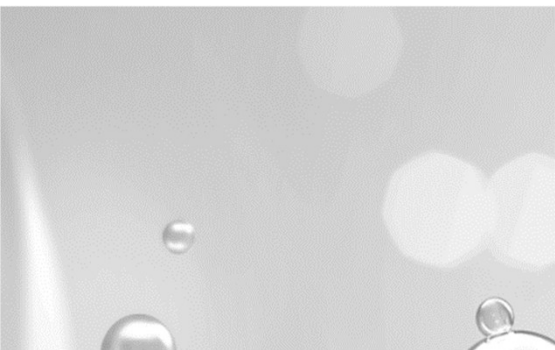


Greater Tokyo Biocommunity GTB Bioinnovation Hubs



2023.9.11
GTB secretary

GTB Bio-innovation Promotion Areas

5. Kawasaki Area

The Open Innovation City with Direct Access to Haneda Airport



CREM TONOHANE



Shimadzu



iCONM/BioLabs

3. HOTS HILL (Hongo/Ochanomizu/Tokyo Station Area)

Large Life-science Academia Community with Leading Industry association



tip (Innovation community at Institute of Science Tokyo)



Entrepreneur Labs at The Univ. of Tokyo



WE AT (A new Innovation Ecosystem)

4. Nihonbashi Area

Global Life Science Business Hub in the Heart of Tokyo



National Cancer Center Japan



Nihonbashi Life Science Building Series



MITSUI LINK-Lab SHINKIBA Series

1. Tsukuba Area

The Biggest Science City with Various Institutions



Tsukuba Digital Bio Base



AMED Programs



Astellas

6. Yokohama Area

Innovative City Focusing on Health and Medical Care



CHUGAI PHARMACEUTICAL



AGC



BioJapan

7. Shonan Area

An Innovation Hub with the Largest Wet Lab, in Collaboration with Neighbouring Hospitals



Shonan iPark



Shonan Kamakura General Hospital

2. Kashiwanoha Area

The Smart City with Top-Tier Universities and the National Cancer Center



NCC Seeds Acceleration Program



Teijin CDMO



Cellares IDMO

8. Chiba/Kazusa Area

The Research Base of Plant, Immunological Medicine and Biomanufacturing



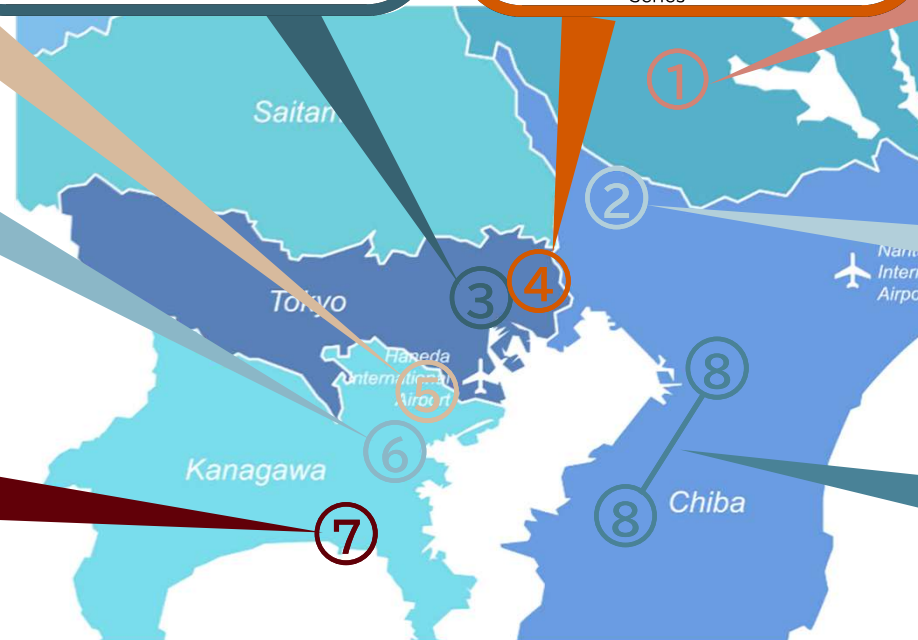
Green Earth Institute



NITE



Kazusa DNA Res. Institute, Chiba Univ.



Note 1) In addition to areas above, Shinjuku, Shinanomachi, Waseda, Tsukiji, Daiba, Tokorozawa, and Wako are emerging areas.
Note 2) As new areas are developed, area definition maybe restructured.

1. Tsukuba Area “The Biggest Science City with Various Institutions”



Launch of the
Tsukuba Digital-Bio
International Center
(2021)



Launched as a
support center under
the AMED program
for academia-
launched medical
SUs (2024)



Astellas Pharma
opens incubation
center "SakuLab™"
(2023)

Primary Contact

- Tsukuba Global Innovation Promotion Agency (TGI) <https://tsukuba-gi.jp/en/>

Consortium

- Tsukuba Life Science Promotion Association (TLSK)

Local Government

- Science and Technology Division, Ibaraki Prefectural Government
- Science and Technology Strategy Division, City of Tsukuba

Function Promoting Industry-Academia Collaboration

- Headquarters for International Industry-University Collaboration, University of Tsukuba
- Tsukuba Clinical Research & Development Organization (T-CReDO), University of Tsukuba
- Research and Innovation Promotion Headquarters, National Institute of Advanced Industrial Science and Technology (AIST)

Incubation Function

- Tsukuba Center Inc. (TCI)
- Tsukuba Startup Park
- Astellas Pharma opens incubation center "SakuLab™"
- XiS WORKSITE

Industrialization Support Function

- Tsukuba Global Innovation Promotion Agency (TGI) / Tsukuba Twin Spark, Inc. (TTS)
- Tsukuba Clinical Research & Development Organization (T-CReDO), University of Tsukuba

Human Resource Development Function

- Tsukuba Clinical Research & Development Organization (T-CReDO), University of Tsukuba
- Master's/Doctoral Program in Life Science Innovation, University of Tsukuba

Funding Function

- Cybernetics Excellence Japan Fund
- Tsukuba SBI Regional Revitalization Fund
- Nocturne Capital (a VC partnered with the University of Tsukuba)

Hospital/Clinical Research Function

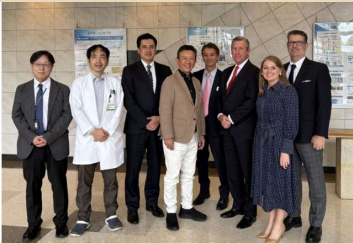
- University of Tsukuba Hospital

Innovation Support Function

- Organization for Open Facility Initiatives, University of Tsukuba
- Tsukuba Innovation Arena (TIA)
- Tsukuba Human Tissue Biobank Center, University of Tsukuba Hospital
- Genebank Project, National Agriculture and Food Research Organization (NARO)
- Laboratory Animal Resource Center, University of Tsukuba
- RIKEN BioResource Research Center
- National Institute of Biomedical Innovation, BSL3
- cohort data related COI/COI-NEXT

2. Kashiwanoha Area “The Smart City with Top-Tier Universities and the National Cancer Center”

Recent Major Investments :



Launch of a Seeds Acceleration Program Led by NCC (2024)



Teijin Group Begins Operation of Its Regenerative Medicine CDO Facility (2024)



Cellares to Open Asia Hub for Regenerative Medicine(open in 2027)

Primary Contact

- **Kashiwa-no-ha Life Science Council**

Function for Industry-Academia Collaboration Initiative

- Academic Research & Innovation Management Organization, **Chiba University**
- Center for Environment, Health and Field Sciences, **Chiba University**
- Organization for Innovation and Social Collaboration, **Tokyo University of Science**

Incubation Function (Facilities)

- **Tokatsu Techno Plaza** (run by Chiba Prefecture)
- **Todai Kashiwa Venture Plaza** (run by SME Support Japan)
- **The University of Tokyo Kashiwa2 Cooperation Hub** (Entrepreneur Hub)
- **Mitsui LINK-Lab Kashiwa-no-ha 1**
- **Biohealth open Innovation Hub, Chiba University**

Human Resource Development Function

- Graduate School of Frontier Sciences, **The University of Tokyo**
- Center for Environment, Health and Field Sciences, **Chiba University**
- **Tokyo University of Science Investment Management Co., Ltd.**

Funding Function

- **Todai Kashiwa Venture Plaza** (run by SME Support Japan)
- **TOKYO UNIVERSITY OF SCIENCE INNOVATION CAPITAL**

Hospital and Clinical Research Function

- **National Cancer Center Hospital East**
Exploratory Oncology Research & Clinical Trial Center

3. Hongo/Ochanomizu/Tokyo Station Area (GTB HOTS HILL)

“Large Life-science Academia Community with Leading Industry association”

The University of Tokyo Entrepreneur Lab



The University of Tokyo Entrepreneur Plaza



Institute of SCIENCE TOKYO



Websites and Primary Contact

- Division of University Corporate Relations, The University of Tokyo
<http://www.ducr.u-tokyo.ac.jp/en/index.html>
- Center for Medical Innovation, Institute of SCIENCE TOKYO
<https://www.tmd.ac.jp/english/>

Function Promoting Industry-Academia Collaboration

- Division of University Corporate Relations, The University of Tokyo
- Translational Research Center, The University of Tokyo Hospital
- Center for Medical Innovation, Institute of SCIENCE TOKYO
- Japanese Association of Medical University Network for Technology Transfer

Incubation Function

- Health Science Research & Development Center, Institute of SCIENCE TOKYO
- tip
- The University of Tokyo Entrepreneur Lab
- The University of Tokyo Entrepreneur Plaza

Human Resource Development Function

- Japanese Association of Medical University Network for Technology Transfer
- Tokyo Biodesign, The University of Tokyo
- Division of University Corporate Relations, The University of Tokyo

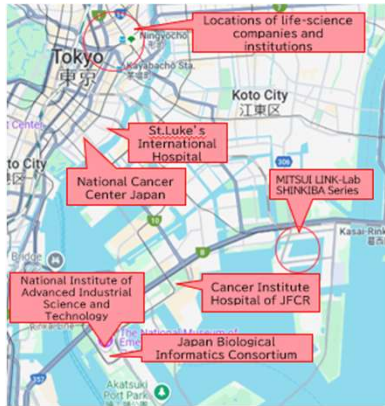
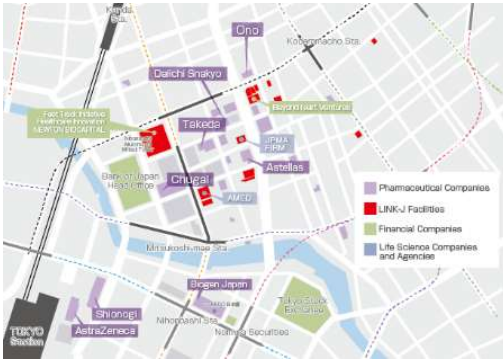
Funding Function

- The University of Tokyo Edge Capital Partners Co., Ltd.
- UTokyo Innovation Platform Co., Ltd.

Clinical Research Function

- The University of Tokyo Hospital
- Institute of SCIENCE TOKYO Hospital
- Juntendo University Hospital

4 .Nihonbashi Area “Global Life Science Business Hub in the Heart of Tokyo”



- Nihonbashi, Tokyo have been pharmaceutical districts for 400 years.
- Accumulation of Japanese pharma majors
(Japan Pharmaceutical Manufacturers Association member organizations and companies are about 30.)
- Life Science is a main industry of Nihonbashi
- 228 life science players have opened their offices in our 12 buildings.
- LINK-J(networking organization)
Number of special memberships 950 in February,2025
- Number of networking events 1151 in 2024

Primary Contact

- Life Science Innovation Network Japan (LINK-J)
- <https://www.link-j.org/en/>

Life Science Companies and Agencies

- Japan Pharmaceutical Manufacturers Association (JPMA)
- Forum for Innovative Regenerative Medicine (FIRM)
- Japanese Agency for Medical Research and Development (AMED)
- A Number of Japanese Pharmaceutical Companies' Headquarter

Incubation Function

- Nihonbashi Life Science Building series
- MITSUI LINK-Lab KASAI, MITSUI LINK-Lab SHINKIBA Series

Funding Function

- Tokyo Stock Exchange, Inc., Bank of Japan
- Nomura Securities Co., Ltd., Daiwa Securities Co., Ltd., SMBC Nikko Securities Inc.
- Development Bank of Japan
- VC funding on Biobusiness (Beyond Next Ventures Inc., DCI partners, Fast Track Initiative, Inc., Healthcare Innovation Co., Ltd, NEWTON BIOCAPITAL PARTNERS, Nippon Venture Capital Co., Ltd., The University of Tokyo Edge Capital Partners Co., Ltd. Remiges Ventures, Inc., Axil Capital Advisors K.K.)

Clinical Research Function

- National Cancer Center Japan
- Cancer Institute Hospital of Japanese Foundation for Cancer Research
- St. Luke's International Hospital

5 . Kawasaki Area “The Open Innovation City with Direct Access to Haneda Airport”



**CReM
TONOHANE:**
- Launch: 2024
- Regenerative
medicine hub



**Shimadzu Tokyo
Innovation Plaza:**
- Established: 2023



**iCONM in
collaboration with
BioLabs**
- Initiated: 2022
- Premium
incubator for life
science startups



Primary Contact

- Kawasaki Institute of Industrial Promotion (KIIP) <https://tonomachi-ksf.kawasaki-net.ne.jp/en/>
- City of Kawasaki



Function Promoting Industry-Academia Collaboration

- Kanagawa Institute of Industrial Science and Technology (KISTEC)
- Innovation Center of NanoMedicine, KIIP(iCONM)
- Tonomachi Lifescience Cluster Division, KIIP
- Regenerative Medicine & Cell Therapy Industrialization Network of Kanagawa (RINK)
- School of Health Innovation, Kanagawa University of Human Services
- Kanagawa Science Park (KSP)
- Keio University Shin-Kawasaki Town Campus and Tonomachi Town Campus



Incubation Facilities

- <Tonomachi to Minamiwatarida>
 - Life Innovation Center (LIC)
 - Life Science & Environment Research Center (LiSE)
- Innovation Center of NanoMedicine, KIIP(iCONM)
- JSR Bioscience and informatics R&D center (JSR BiRD)
- Cybernics Medical Innovation Base-A
- Techno Hub Innovation Kawasaki (Think)
- <Shin-kawasaki> • Kawasaki Business Incubation Center (KBIC)
- <Mizonokuchi> • Kanagawa Science Park (KSP)
- <Kawasaki Station> • Kawasaki-NEDO Innovation Center(K-NIC)



Funding Support

- Kanagawa Science Park (KSP)
- Hamagin Foundation for promotion of Industry and culture and its co-sponsors



Human Resource Development

- School of Health Innovation, Kanagawa University of Human Services
- Kanagawa Institute of Industrial Science and Technology (KISTEC)
- Keio University Shin-Kawasaki Town Campus and Tonomachi Town Campus
- Kanagawa Science Park (KSP)



Hospital and Clinical Research Functions

- Collaboration with Keio University Hospital, Kawasaki Municipal Hospital, and Haneda Innovation City (Fujita Health University).

6. Yokohama Area “Innovative City Focusing on Health and Medical Care”



CHUGAI PHARMACEUTICAL



AGC



BioJapan

Primary Contact

- Innovation Promotion Division Economic Affairs Bureau CITY OF YOKOHAMA <https://www.city.yokohama.lg.jp>

Function Promoting Industry-Academia Collaboration

- Institute of New Industry Incubation, Center for Innovation Management, Greater Tokyo Innovation Ecosystem (GTIE), Holistic Life Science (HLS), Institute of Science Tokyo (Science Tokyo)
- Research Initiatives and Promotion Organization, Yokohama National University
- Center for Promotion of Research and Industry-Academic Collaboration, Yokohama City University
- Open Innovation Lab, Yokohama City University
- Kihara Memorial Yokohama Foundation for the Advancement of Life Sciences
- Yokohama Industrial Development Corporation (IDEC Yokohama)
- ME-BYO Industry Association (Kanagawa Prefecture)
- RIKEN Yokohama Campus
- TECH HUB YOKOHAMA (City of Yokohama)

Incubation Function

- Yokohama Bio Industry Center (YBIC)
- Yokohama Leading Venture Plaza, Yokohama Joint Research Center
- Life Science Research Center
- Yokohama Kanazawa High-Tech Center Techno-Core
- Science Tokyo Yokohama Venture Plaza (YVP)
- German Industry Park
- Yokohama Business Park (YBP)
- Shibusawa Advanced Business Center NO.2
- AQUARIA TOWER YOKOHAMA
- GRC Yokohama Bay Research Park
- GRC Yokohama Science Cube

Human Resource Development Function

- Center for Entrepreneurship Education, Academy Entrepreneurship Development Programs, Science Tokyo
- Education and Research Center for Economic Growth Strategy, Yokohama National University
- Kanagawa Institute of Industrial Science and Technology (KISTEC)
- YOXO BOX (City of Yokohama), Yokohama Future Organization

Funding Function

- Healthcare New Frontier Fund

Clinical Research Function

- Yokohama City University Hospital, YCU Medical Center, YCU Center for Novel and Exploratory Clinical Trials
- Kanagawa Cancer Center
- Center for Medical Innovation, Institute of Science Tokyo (Science Tokyo)

7. Shonan Area “Innovation Hub with Largest Wet Lab, in Collaboration with Neighboring Hospitals”

Main Organizations :

Research Facilities and Medical Institutions

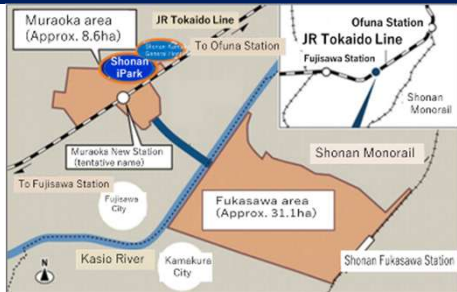
Shonan Health Innovation Park



A group of 1+5 interconnected 10-story office and research buildings where companies and organizations can co-locate, with state-of-the-art laboratory facilities, including a P2-level biological laboratory, ready for occupancy on day one.

126 resident companies, 69 member companies (as of 2025.03)
Total fundraised: 144 billion yen (2026) **Generated collaboration: about 2,200 cases** (2023) **IPO&M&A: 7 companies** (2025) *4 for IPO, 3 for M&A

Center for Health Innovation Concept



The project is centered on the Muraoka district of Fujisawa City (approx. 8.6 ha) and the Fukasawa district of Kamakura City (approx. 31.1 ha). Together with Kanagawa Prefecture, Fujisawa City, Kamakura City, and Shonan Kamakura General Hospital, the area aims to promote cutting-edge health innovation.

Primary Contact

- Shonan Health Innovation Park (Shonan iPark)
- <https://www2.shonan-ipark.com/inquiryen.html>

Industry-Academia Collaboration Platforms

- iNexS (Academia-industry drug research Matching Consortium)
- T-CiRA (Takeda - Kyoto University)

Incubation (start-up and bio venture support)

- Incubation Program (Company sponsored, crowdfunding)
- Business support (iPark SAMURAI, Science Mentorship, Study group on regulatory science)

Company Collaboration Platforms

- Commercialization Support System (iPark SAMURAI, AI/DX Concierge, Leaders' Club)
- Virtual partnering platform

Funding Platforms

- Japan VC Consortium –facilitate VC and CVC collaborations
- Opportunity of matching with Asian Bio Start-ups to foreign investors (SHIC)

Clinical Research Collaborations

- Shonan Kamakura General Hospital Advanced Medical Center, Trauma and Critical Care Center

Local Area Collaboration

- Muraoka-Fukasawa District's Center for Health Innovation*1.
- Shin-Shonan Wellbeing Consortium, a private-sector initiative for next-generation projects

*1 Signed "five-party cooperation MoU" with Kanagawa Prefecture, Fujisawa City, Kamakura City, and Shonan Kamakura General Hospital.

8. Chiba/Kazusa Area “The Research Base of Plant, Immunological Medicine, and Biomanufacturing”



Green
Earth
Institute



NITE



Kazusa DNA
Research
Institute



Chiba
University

Primary Contact

- Chiba Bio-Lifescience Network
- bio-network@kazusa.or.jp

Function Promoting Industry-Academia Collaboration

- Chiba Bio-Lifescience Network
- Academic Research & Innovation Management Organization, Chiba University (IMO)
- Future Medicine Education and Research Organization, Chiba University
- Chiba University Connect, KK

Incubation Function

- Kazusa Incubation Center
- Chiba-dai Inohana Innovation Plaza
- Knowledge-based Collaborative Research Center, Chiba University (KCRC)

Human Resource Development Function

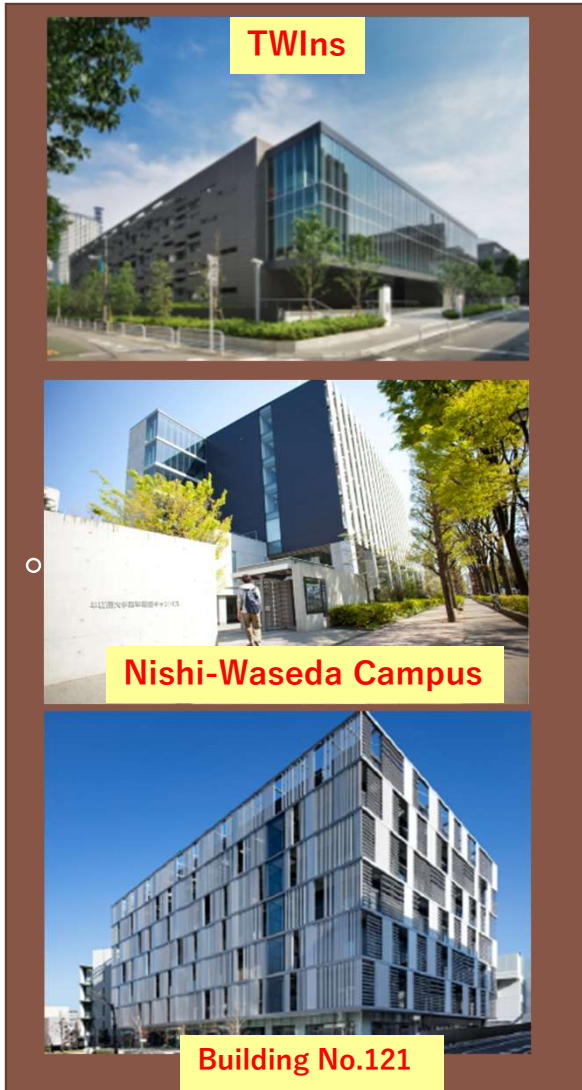
- Academic Research & Innovation Management Organization, Chiba University
- Center for Entrepreneurship, Chiba University

Clinical Research Function

- Chiba University Hospital
- Chiba Foundation for Health Promotion & Disease Prevention
- Chiba Cancer Center
- Chiba Children's Hospital

Waseda Shinjuku Open Innovation Bio Satellite

“Multi-faceted innovation promotion district where Waseda University's wide range of science fields and the medical sciences of its neighbouring institutions co-create”



Website and Primary Contact

Research Innovation Center, Waseda University

WEB: <https://www.waseda.jp/inst/research/en>

Contact: kensen@list.waseda.jp

Research Function

- Tokyo Women's Medical University- Waseda University Joint Institution for Advanced Biomedical Sciences (TWIns)
- Waseda University, Nishi-Waseda Campus

Function Promoting Industry-Academia Collaboration

- Research Organization for Open Innovation Strategy, Waseda University

Innovation Promotion (Facility)

- Building No.121, Waseda University

Business Support

- Center for Entrepreneurship, Waseda University
- Research Innovation Center, Waseda University

Funding

- Waseda PoC Fund, WERU Investment, Beyond Next Ventures, WUV

Human Resource Development

- Center for Entrepreneurship, Waseda University